



KERAMOS S

Dental Zirconia Sintering Furnace – High Density SiC Heaters

Description

Keramos S series with maximum continuous operation temperature of 1550 °C is a furnace allows the majority of commercially available zirconium oxides sintering.

The well recognized absence of chemical interaction between SiC and Zirconia makes this model an ideal choice for a dental laboratory performing Zirconia crowns sintering. Zirconia crowns unafraid treated inside the chamber without the need for covering or providing other protection means.

The furnace is a stand-alone device equipped with embedded controllers and electrical circuits to perform a Zirconia sintering program. Standard equipped with a Digital LCD display temperature controller providing 15 step programming with 1 program storage.

A Windows Tablet PC optionally delivered with the furnace running the specially designed **KeraWorks** Software, or any other computer, use as a human interface to the device. After programming and downloading the program to the furnace processor the computer could be disconnected and re-connected any time without interrupting the executed program. The system programming is open and is suitable for various supplier materials. Windows architecture **KeraWorks** Software provide friendly and easy to use programming and monitoring environment.

Utilizing the unique high density Kanthal SiC resistors these furnaces have superior performance in terms or resistance to oxidation and chemical attack, highly extending the workable life of your investment.

The furnace package includes a set of Zirconia Toughened Alumina Sintering Bowl and Lid.



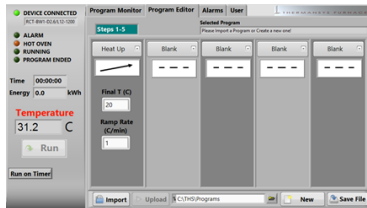
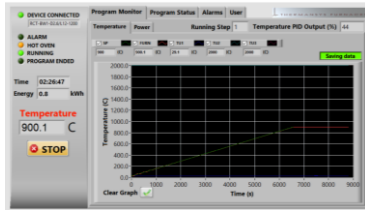
HELLENIC PRODUCT.

Contact details:

Ath. Stagiriti 7- Pilea, Thessaloniki Greece, 54352
 tel. 0030 2310 942346, fax. 0030 2310 942336
 e-mail: info@thermansys.com
www.Thermansys.com

Information and data contained in this document was considered correct at the time of publication. Thermansys® is reserving the right to make modifications as a result of design improvements.

KeraWorks control and monitoring software.



- Programming with up to 15 Temperature programming steps. Graphical inspection.
- Storage and reload of unlimited number of distinct programs.
- Continuous monitoring of Temperature. Real time graphical presentation of executed program data.
- Data file creation for all executed programs. Saves all data on local memory.
- Real time actual Power (W) and totalized Energy (kWh) chart.
- Alarm and event message tab. Overheating Alarm, open Thermocouple Alarm, Heater Alarm.
- Programmable over temperature limiter monitor/configuration.
- Remote control through network connection.

- Power Safe, Uninterrupted Power Supply backup configuration. Recovers program after short term power failure.
- Unattended operation, can be programmed to start and finish a program overnight.

Specifications:

- Maximum/continuous temperature 1550 °C.
- Operating Power: 230 VAC – 50/60Hz. 115 VAC – 50/60Hz
- R type (PtRh/Rt) embedded thermocouple. Resolution 0.1 °C
- Temperature control accuracy ± 1 °C.
- Resistors type: Kanthal Global, SiC, fully exposed.

Optional features:

- 10.1in Windows Tablet PC running the specially designed **KeraWorks** Software.
Add suffix _TSC
- Programmable stand-alone over-temperature limiter (Watchdog) with manual reset in accordance with EN 60519-2 to protect the heater and load.
Add suffix _WD
- UPS (Uninterrupted Power Supply). Keep system alive for short periods of power failure and restore program after power recovery
Add suffix _UPS

Additional Sintering Bowl order

- ZTA Sintering Bowl Diameter 120mm
P/N: ZTA-SB-C-120
- ZTA Bowl Lid Diameter 120mm
P/N: ZTA-SL-C-120
- ZTA Sintering Bowl Diameter 100mm
P/N: ZTA-SB-C-100
- ZTA Bowl Lid Diameter 100mm
P/N: ZTA-SL-C-100

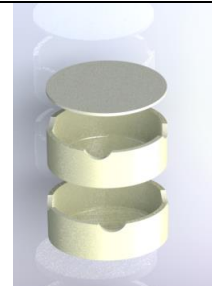


TABLE1. KERAMOS S series Models

Model Part Number	Heat up time (min)	Furnace int. dim. WxHxD mm	Nominal Heated Vol. (Liters)	Furnace ext. dim. WxH*xD mm	Standard package Sintering Bowl	Max Sintering Bowl Capacity	Max. Power Watt
KERAMOS S1	65	110x120x120	1	450x570x410	1xΦ100x30mm	2	1600
KERAMOS S3	75	130x180x130	3	470x630x430	1xΦ120x30mm	3	2200

* Plus 100 mm for chimney. When Door is open add 180mm.

CE Certified. Compliant with **Low Voltage Directive 2006/95/EC** (harmonized referenced standard EN 61010-1: 2001 and EN 61010-2-010:2003) and **EMC Directive 2004/108/EC** (harmonized referenced standard EN 61326-1:2006)

 HELLENIC PRODUCT.

Contact details:

Ath. Stagiriti 7- Pilea, Thessaloniki Greece, 54352
tel. 0030 2310 942346, fax. 0030 2310 942336
e-mail: info@thermansys.com

www.Thermansys.com

Information and data contained in this document was considered correct at the time of publication.
Thermansys® is reserving the right to make modifications as a result of design improvements.

© THERMANSYS® 2019