

## BOX TYPE FURNACES

### 1700 °C max. Temperature -MoSi<sub>2</sub> resistors

Model family: **BOX-AM10-1700**

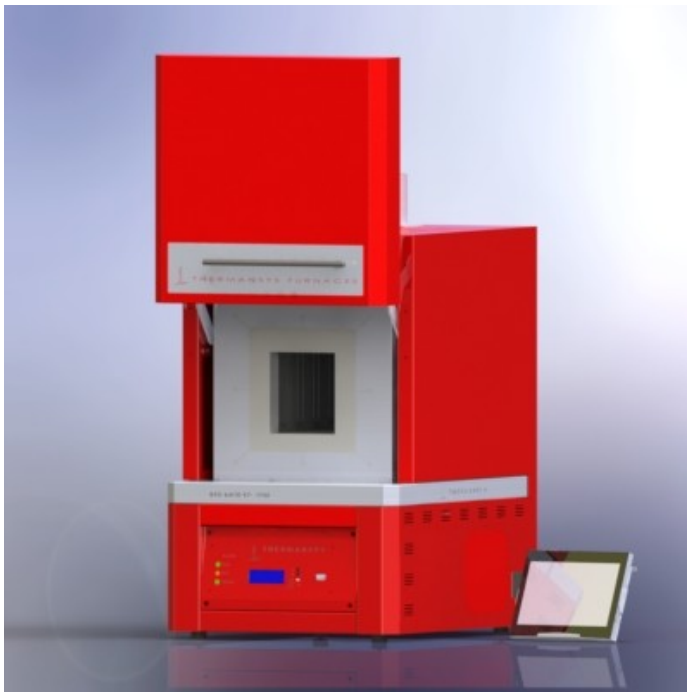
### Description.

**BOX-AM10-1700** model being able to reach and maintain temperature at **1700 °C continuously** represents an ultra high temperature chamber furnace.

This model family, whilst maintaining the same advantages and performance that our BOX-AM10-1600 model family has, was designed to provide a solution for applications requiring highest treatment temperature.

Best quality and highest temperature ratings MoSi<sub>2</sub> resistors used, known for their long working life under oxidizing atmosphere, are not affected by thermal shock and can withstand very high element power loads thereby provide a heating solution for extremely fast temperature ramping processes. Can be used continuously or intermittently with no restriction.

Having as major priority the economical operation this furnace was designed with double wall low mass density thermal ceramic insulation serving both as a heat exchanger preheating the incoming air and as a heat barrier improving the overall thermal insulation.

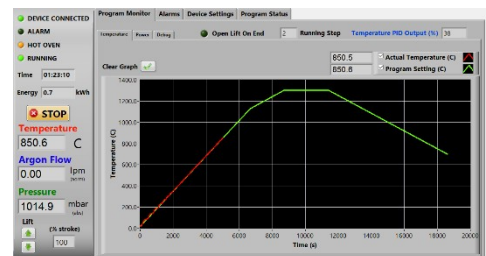


**Ergonomic design with no protruding edges, bolts or other features combines stainless steel parts with painted finish parts for an improved aesthetic result.**

**Standard equipped with a Digital LCD display temperature controller providing 15 step programming with 1 program storage.**



**Optionally equipped with a remote, touch screen, computer running the specially designed PYROLOGISM 2.0 software, provides a really unique and friendly, windows oriented architecture interface with multiple, advanced features and peripherals.**



### Key features.

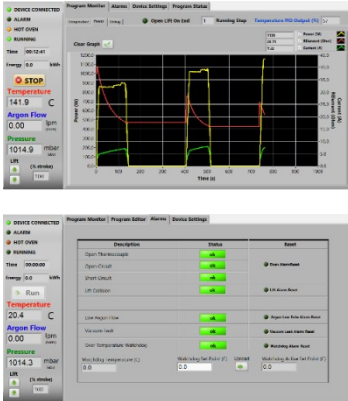
- Control strategy based on Thermansys® PCC (Power Consistent Control) platform insures silent operation and compliance with EMC standards.
- Modern double wall construction keeps external surfaces temperature low. Internal skin is exclusively made from stainless steel to enhance durability.
- Lift up door keep hot surfaces away from operator.
- Heater failure, open control thermocouple detection, door open alarms and interlocks. Alarms and events front panel led array.
- Optional Touch Screen Computer running PYROLOGISM 2.0 software human-machine interface.
- Kanthal Super 1800 MoSi<sub>2</sub> Heating Elements.
- Power and true RMS Current measuring circuits.
- Stand alone over-temperature limiter (Watchdog) with manual reset in accordance with EN 60519-2 to protect the oven and load. Overrides main controller and cut off heater power if user adjustable high limit is reached.

#### Contact details

Ath. Stagiriti 7- Pilea, Thessaloniki Greece, 55534  
 tel. 0030 2310 942346, fax. 0030 2310 942336  
 e-mai: [info@thermansys.com](mailto:info@thermansys.com)  
[www.thermansys.com](http://www.thermansys.com)

Information and data contained in this document was considered correct at the time of publication. Thermansys® is reserving the right to make modifications as a result of design improvements.

# PYROLOGISM control and monitoring software.



- Quick setting of a single ramp rate to a set point -run on timer function.
- Set-point programming with up to 15 ramp and constant temperature programming steps – graphical inspection of programming.
- Storage and reload of unlimited number of distinct programs.
- Graphical inspection of programming.
- Real time chart illustrating control temperature and running set point.
- Real time true-RMS Current (A), Voltage (V) and Power (W) measurements.
- Real time actual Power (W) and totalized Energy (kWh) chart.
- Saves all data on local memory.
- Tools for manual PID tuning and auto-tuning.
- Virtual keyboard, alarm and event message tab.
- Watchdog over temperature limiter monitor/configuration.

## Specifications and Ordering Information.

### Standard features:

- Maximum continuous temperature 1700°C.
- Operating Power: 240 /400VAC – 50/60Hz.
- Digital LCD temperature controller with 15 step programming and I program storage.
- B type embedded thermocouples for main controller and (optionally) for over-temperature limiter feedback.
- Temperature control accuracy  $\pm 1$  °C.
- Exposed resistors type. **Kanthal Super 1800** Molybdenum Disilicide-MoS<sub>2</sub>.
- Safety thermostat
- Thermocouple inputs: 3 chan. - B, K, R, S Software configurable.

### Optional features:

- Remote, touch screen computer running the specially designed PYROLOGISM 2.0 software on a 10.0in Tablet PC.  
**Add suffix \_TSC.**
- Programmable stand-alone over-temperature limiter (Watchdog) with manual reset in accordance with EN 60519-2 to protect the heater and load,  
**Add suffix \_WD.**
- UPS (Uninterrupted Power Supply). Keep system alive for short periods of power failure and restore program after power recovery  
**Add suffix \_UPS**
- Flow controllers: Number of lines: 1 or 2  
Flow range: 0.01-20 std L/min - Accuracy:  $\pm 2\%$  of reading for Air,  $\pm 3\%$  of reading for N<sub>2</sub> - Typical Control stability:  $\pm 0.1$  std L/min.  
**Add suffix \_Line 1**, for gas type calibration: Air,  
**Add suffix \_Line 2**, for gas type calibration: Nitrogen (N<sub>2</sub>)

**CE Certified.** Compliant with **Low Voltage Directive 2006/95/EC** (harmonized referenced standard EN 61010-1: 2001 and EN 61010-2-010:2003) and **EMC Directive 2004/108/EC** (harmonized referenced standard EN 61326-1:2006).

**TABLE1. BOX-AM10-1700 Family Models**

Model Part Number	Max. Cont. Temp. °C x Heat up time* min	Furnace internal dim. WxHxD mm	Heated Volume liters	Furnace external dim. WxH**xD mm	Nominal Max. Power (W)
<b>_V1.6-1700</b>	1700 x 70	120x140x100	1.6	480x750x500	2000
<b>_V2.5-1700</b>	1700 x 70	140x160x120	2.5	500x770x520	2600
<b>_V4.5-1700</b>	1700 x 70	140x160x200	4.5	500x770x520	4200
<b>_V7-1700</b>	1700 x 70	140x160x320	7.0	500x770x640	6400
<b>_V10-1700</b>	1700 x 70	160x200x320	10.0	520x810x640	7600

\* Furnace working with no load.

\*\* Plus 100 mm for chimney

### IMPORTANT ORDERING NOTES:

- Models Part Number listed in Table 1 concern complete turn key systems without flow controllers included.

#### Ordering Examples:

- BOX-AM10\_V2.5-1700: This Part Number includes one BOX-AM10-1700 family furnace having 140x160x120 mm internal chamber dimensions including all standard features.

- To order the furnace with one flow controller add at the end of the part number the suffix "LINE X",

e.g: BOX-AM10-V2.5-1700-LINE1 for air calibration or BOX-AM10-V2.5-1700 LINE2 for Nitrogen calibration

-BOX-AM10\_V2.5-1700-TSC-WD. This Part Number includes one BOX-AM10-1700 family furnace having 140x160x120 internal chamber dimensions including all standard features plus a Tablet PC running the PYROLOGISM 2.0 software and a programmable over-temperature limiter.

 **HELLENIC PRODUCT.**

### Contact details

Ath. Stagiriti 7- Pilea, Thessaloniki Greece, 55534

tel. 0030 2310 942346, fax. 0030 2310 942336

e-mai: info@thermansys.com

[www.thermansys.com](http://www.thermansys.com)

Information and data contained in this document was considered correct at the time of publication.

Thermansys® is reserving the right to make modifications as a result of design improvements.