

## BOX TYPE FURNACES

### 1800 °C max. Temperature -MoSi<sub>2</sub> resistors

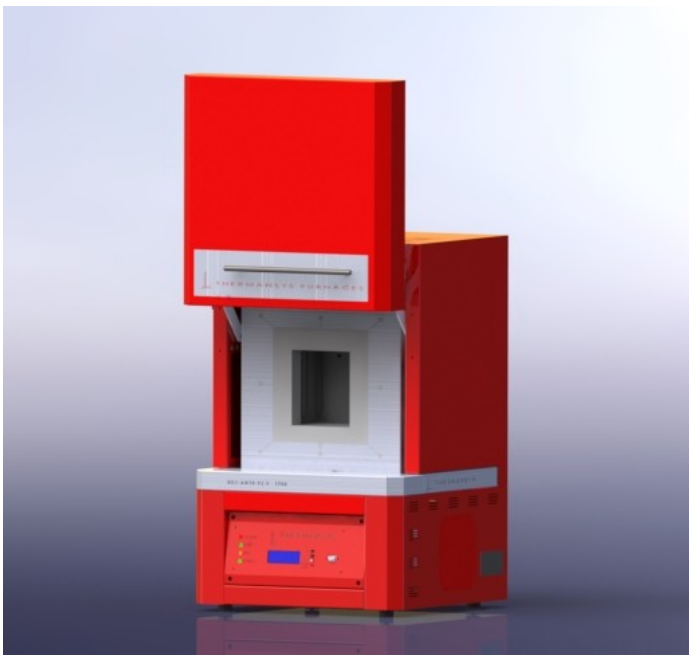
### Model family: BOX-AM10-1800

### Description.

**BOX-AM10-1800** model being able to reach **1800 °C** and maintain temperature at **1750 °C continuously** represents an ultrahigh temperature chamber furnace.

Best quality and highest temperature ratings KANTHAL® Super 1900 MoSi<sub>2</sub> resistors used, known for their long working life under oxidizing atmosphere, are not affected by thermal shock and can withstand very high element power loads thereby provide a heating solution for extremely fast temperature ramping processes.

This furnace is constructed with multilayer fibrous, low mass density, and high thermal shock resistance thermal ceramic Al<sub>2</sub>O<sub>3</sub> insulation. Having as major priority the economical operation the multilayered insulation boards are creating double wall between them serving both as a heat exchanger preheating the incoming air and as a heat barrier improving the overall thermal insulation.



**Ergonomic design with no protruding edges, bolts or other features combines stainless steel parts with painted finish parts for an improved aesthetic result.**

Taking advantage of the optional addition of up to two flow control systems (Nitrogen and/or Air) the user can prepare flow mixtures with preset concentrations of Oxygen in Nitrogen or work under fully inert (Nitrogen) atmosphere.

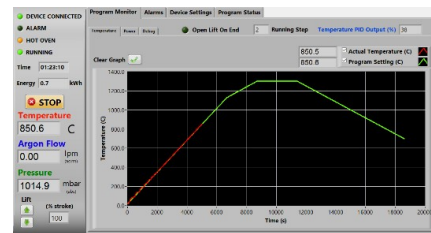
### Key features.

- Control strategy based on Thermansys® PCC (Power Consistent Control) platform insures silent operation and compliance with EMC standards.
- Modern double wall construction keeps external surfaces temperature low. Internal skin is exclusively made from stainless steel to enhance durability.
- Heater failure, open control thermocouple detection, door open alarms and interlocks. Alarms and events front panel led array.
- Optional Touch Screen Computer running PYROLOGISM 2.0 software human-machine interface.
- Power and true RMS Current measuring circuits.
- Stand alone over-temperature limiter (Watchdog) with manual reset in accordance with EN 60519-2 to protect the oven and load. Overrides main controller and cut off heater power if user adjustable high limit is reached.
- Lift up door keep hot surfaces away from operator.

**Standard equipped with a Digital LCD display temperature controller providing 15 step programming with 1 program storage.**



**Optionally equipped with a remote, touch screen, computer running the specially designed PYROLOGISM 2.0 software, provide a really unique and friendly, windows oriented architecture interface with multiple, advanced features and peripherals.**

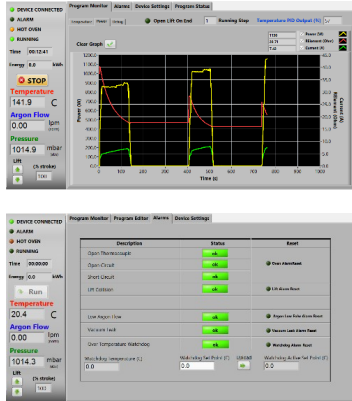


#### Contact details

Ath. Stagiriti 7- Pilea, Thessaloniki Greece, 54352  
tel. 0030 2310 942346, fax. 0030 2310 942336  
e-mai: [info@thermansys.com](mailto:info@thermansys.com)  
[www.thermansys.com](http://www.thermansys.com)

Information and data contained in this document was considered correct at the time of publication. Thermansys® is reserving the right to make modifications as a result of design improvements.

# PYROLOGISM control and monitoring software.



- Quick setting of a single ramp rate to a set point -run on timer function.
- Set-point programming with up to 15 ramp and constant temperature programming steps – graphical inspection of programming.
- Storage and reload of unlimited number of distinct programs.
- Graphical inspection of programming.
- Real time chart illustrating control temperature and running set point.
- Real time true-RMS Current (A), Voltage (V) and Power (W) measurements.
- Real time actual Power (W) and totalized Energy (kWh) chart.
- Saves all data on local memory.
- Tools for manual PID tuning and auto-tuning.
- Virtual keyboard, alarm and event message tab.
- Watchdog over temperature limiter monitor/configuration.

## Specifications and Ordering Information.

### Standard features:

- Maximum/continuous temperature 1800/1750 °C.
- Operating Power: 240 /400VAC – 50/60Hz.
- Digital LCD temperature controller with 15 step programming and I program storage.
- B type embedded thermocouples for main controller and (optionally) for over-temperature limiter feedback.
- Temperature control accuracy  $\pm 1$  °C.
- Exposed resistors type. **Kanthal Super 1900** Molybdenum Disilicide-MoS<sub>2</sub>.
- Safety thermostat
- Thermocouple inputs: 3 chan. - B, K, R, S Software configurable (optional)

### Optional features:

- Remote, touch screen computer running the specially designed PYROLOGISM 2.0 software on a 10.0in Tablet PC.  
**Add suffix \_TSC.**
- Programmable stand-alone over-temperature limiter (Watchdog) with manual reset in accordance with EN 60519-2 to protect the heater and load,  
**Add suffix \_WD.**
- UPS (Uninterrupted Power Supply). Keep system alive for short periods of power failure and restore program after power recovery  
**Add suffix \_UPS**
- Flow controllers: Number of lines: 1 or 2  
Flow range: 0.01-20 std L/min - Accuracy:  $\pm 2\%$  of reading for Air ,  $\pm 3\%$  of reading for N<sub>2</sub> - Typical Control stability:  $\pm 0.1$  std L/min.  
**Add suffix\_Line 1**, for gas type calibration: Air,  
**Add suffix\_Line 2**, for gas type calibration: Nitrogen (N<sub>2</sub>)

**CE Certified.** Compliant with **Low Voltage Directive 2006/95/EC** (harmonized referenced standard EN 61010-1: 2001 and EN 61010-2-010:2003) and **EMC Directive 2004/108/EC** (harmonized referenced standard EN 61326-1:2006)

**TABLE1. BOX-AM10-1800 Family Models**

Model Part Number	Heat up time* ( min)	Furnace internal dim. WxHxD mm	Nominal Heated Volume (Liters)	Furnace external dim. WxH**xD mm	Max. Power (W) / Total No. Of resistors
BOX-AM10... _V3-1800	90	150x150x120	3	520x780x520	3000/ 2
_V4-1800	90	150x150x150	4	520x780x520	4800/4
_V6-1800	90	160x150x240	6	540x780x580	6200/6
_V8-1800	90	160x200x240	8	540x830x580	7200/6
V16-1800	90	200x250x340	17	620x940x685	9600/6

\* Furnace working with no load.

\*\* Plus 100 mm for chimney

### IMPORTANT ORDERING NOTES:

- Models Part Number listed in Table 1 concern complete turn key systems without flow controllers included.

#### Ordering Examples:

- BOX-AM10\_V3-1800: This Part Number includes one BOX-AM10-1800 family furnace having 150x150x120 mm internal chamber dimensions including all standard features.
- To order the furnace with one flow controller add at the end of the part number the suffix "LINE X",  
e.g: BOX-AM10-V3-1800-LINE1 for air calibration or BOX-AM10-V3-1800\_LINE2 for Nitrogen calibration
- BOX-AM10\_V3-1800-TSC-WD. This Part Number includes one BOX-AM10-1800 family furnace having 150x150x120 internal chamber dimensions including all standard features plus a Tablet PC running the PYROLOGISM 2.0 software and a programmable over-temperature limiter.

 **HELLENIC PRODUCT.**

### Contact details

Ath. Stagiriti 7- Pilea, Thessaloniki Greece, 54352  
tel. 0030 2310 942346, fax. 0030 2310 942336  
e-mai: [info@thermansys.com](mailto:info@thermansys.com)  
[www.thermansys.com](http://www.thermansys.com)

Information and data contained in this document was considered correct at the time of publication. Thermansys® is reserving the right to make modifications as a result of design improvements.